

26  
YEARS

COMMERCIAL PRESENTATION





# Who We Are

Founded in 1999 with offices in the cities of Taubaté, Tremembé, and São Paulo, Engevale Engenharia is a solid engineering company with operations in the private and public sectors, serving clients throughout Brazil. We provide differentiated services in areas such as Scheduled Maintenance Shutdowns, Routine Maintenance, Industrial Maintenance, Specialized Boiler Making, Heavy Civil Construction, and Electromechanical Assembly, among others.

We have a robust operational structure to provide our clients with a wide range of solutions to fully meet their needs with safety, quality, speed and efficiency.

Our main service instrument is the competence and dedication of our professional team, which is always committed to operational excellence, stakeholder satisfaction, and results in all services offered.





## Mission

Our mission is to lead with innovation and delight every client by providing solutions of excellence and reliability. We are committed to acting in an innovative, sustainable, and dedicated manner, creating a positive and lasting impact. We are deeply committed to understanding our clients' needs, adjusting our solutions to overcome challenges, and delivering exceptional results that endure over time.

## Vision

To establish standards of excellence in the engineering segment, committing to the total satisfaction of our clients and the continuous improvement of our processes. Our goal is not just to meet expectations, but to exceed them, creating elevated and lasting standards. We see our vision not only as market leadership but as a transformative force, inspiring other organizations to adopt sustainable and innovative practices. We want to be recognized not just for the structures we build, but for the positive impact we leave on the communities where we are present.

# Values

Our values define our commercial behavior. They are the foundation for today's activities and tomorrow's growth.

We believe that honesty, transparency, responsibility, and dedication are the basis of trust.

We build mutually beneficial business relationships that go beyond legal and ethical practices, fulfilling our commitments in ways that exceed our clients' expectations.

- People First
- Guardians of the Environment
- Integrity and transparency
- Innovation and competitiveness
- Excellence and client satisfaction





# International Certifications

**CERTIFIED**

**ISO 9001**

**ISO 14001**

**ISO 45001**





# UN Global Compact Brazil Network

As a signatory to the UN Global Compact – Brazil Network since 2021, Engevale Engenharia is committed not only to technical excellence but also to practicing ethical and transparent management, with a commitment to social and environmental responsibility.

We have an unnegotiable commitment to human rights, ensuring dignity and respect for our employees, partners and communities. As a member of the Global Compact, we reinforce our responsibility to combat corruption and discrimination, promote inclusion, and prevent all forms of exploitation, including child and forced labor.

We also ensure freedom of association and collective bargaining, in accordance with International Labour Organization (ILO) conventions, and maintain an ethical work environment free from harassment and abuse.





# Our Code of Conduct

We fully comply with current labor laws, including those related to wages, working hours, benefits, favorable working conditions and child labor.

We do not use work that is the result of mental health issues, coercion, physical punishment, slavery, or other oppressive working conditions. Our employees must respect the right of every person to participate in all aspects of employment, regardless of personal characteristics or beliefs, providing a work environment free from the threat of retaliation, intimidation or harassment.

Our employees must operate in an environmentally responsible manner to minimize adverse impacts on the environment. They are constantly encouraged to conserve natural resources, avoid using hazardous materials whenever possible, and participating in activities related to sustainability.





# Compliance

Our corporate governance presumes the separation between executive, advisory, strategic planning and control activities.

Our Compliance team is responsible for ensuring the conformity of our internal procedures with internally defined standards and best practices. It also ensures the adequacy and functioning of the control system, acting in risk mapping and supervising compliance with laws, regulations, policies and guidelines.

Once deviations or deficiencies are identified, the area contributes to the revision of existing controls and the definition of the timeline and corrective initiatives.

With a hierarchical model of few levels, our management is highly favored in decision-making agility and administrative flexibility.



# Our DNA

Engevale Engenharia is a company with a differentiated DNA, the result of years of hard work and deep evolution.

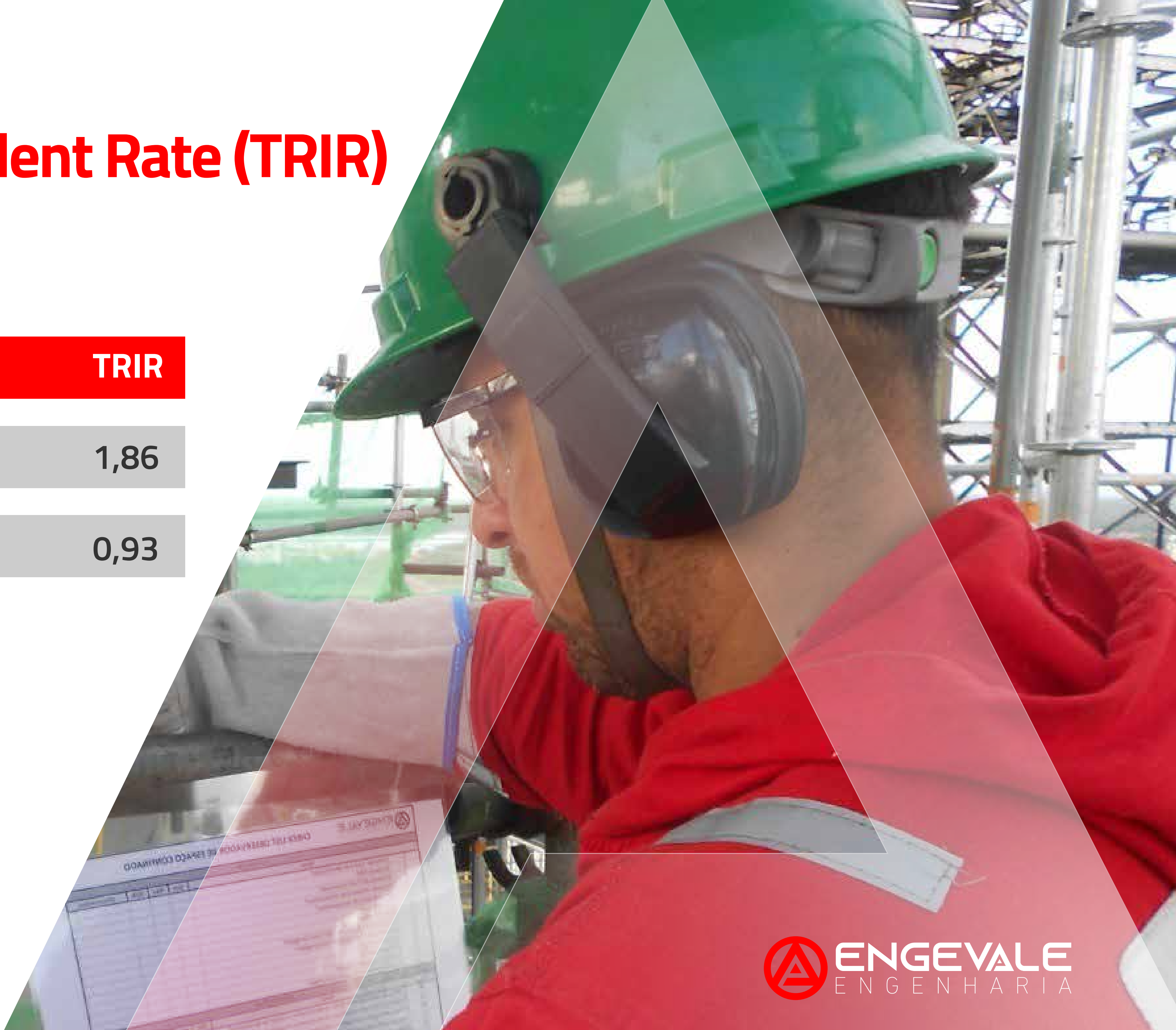
Based on the knowledge gained in the past, but with an eye on the future, our fundamental premises in the present are:

- ZERO Accidents;
- Pursuit of excellence;
- Operational availability and safety;
- Continuous improvement of productivity;
- Search for new technologies;
- Increased plant yield;
- Relationships based on transparency and trust;
- Longevity of the commercial relationship;
- Cost reduction;
- Training and development of our leaders;
- Strong corporate leadership.

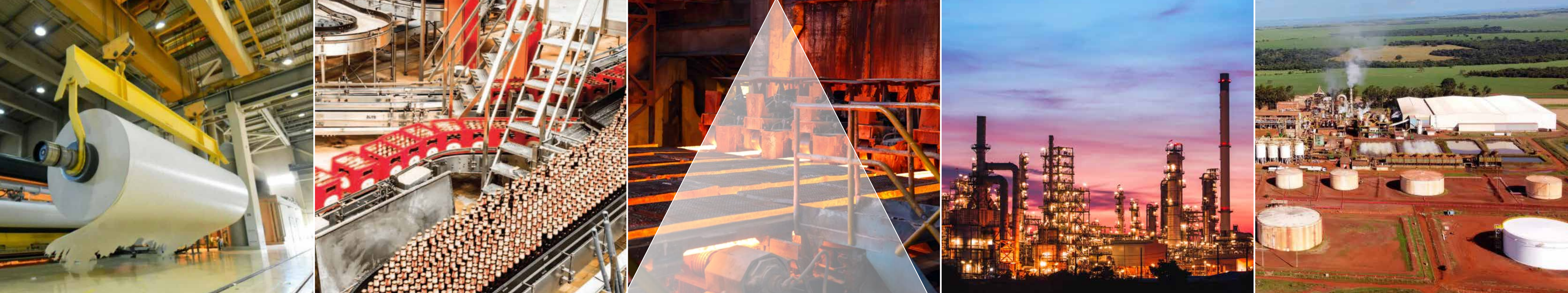


# Total Recordable Incident Rate (TRIR)

YEAR	HH	TRIR
2023	2.692.800	1,86
2024	4.259.200	0,93







- Ⓐ Scheduled Maintenance Shutdowns
- Ⓐ Routine Maintenance
- Ⓐ Industrial Maintenance

## Solutions

- Ⓐ Specialized Boiler Making
- Ⓐ Heavy Civil Construction
- Ⓐ Electromechanical Assembly





# Scheduled Maintenance Shutdowns





# Scheduled Maintenance Shutdowns

- Management of Scheduled Maintenance Shutdown contracts in various static and dynamic equipment, such as heat exchangers, reactors, furnaces, boilers, converters, storage tanks, fractionation towers, pressure vessels, spheres, filters and piping.
- Coordination of multi-disciplinary teams in Scheduled Maintenance Shutdown events, such as mechanical, boiler making, welding, electrical, instrumentation, scaffolding assembly, painting, thermal insulation and refractory.
- Global planning of scheduled activities (macro and micro).
- Management and interface with third-party suppliers, projects and the supply chain.





# Scheduled Maintenance Shutdowns

- Elaboration and training of critical execution procedures.
- Systemic monitoring of planning curves to meet the Pre-Shutdown, Shutdown, and Post-Shutdown phases, aiming for compliance with established deadlines.
- Industrial climbing services and/or confined spaces in controlled and high-temperature areas.
- Continuous qualification of the employed workforce.
- Quality inspection and auditing throughout the execution of services.
- Elaboration and complete delivery of the event's data book.





# Scheduled Maintenance Shutdowns





# Scheduled Maintenance Shutdowns





# Routine Maintenance





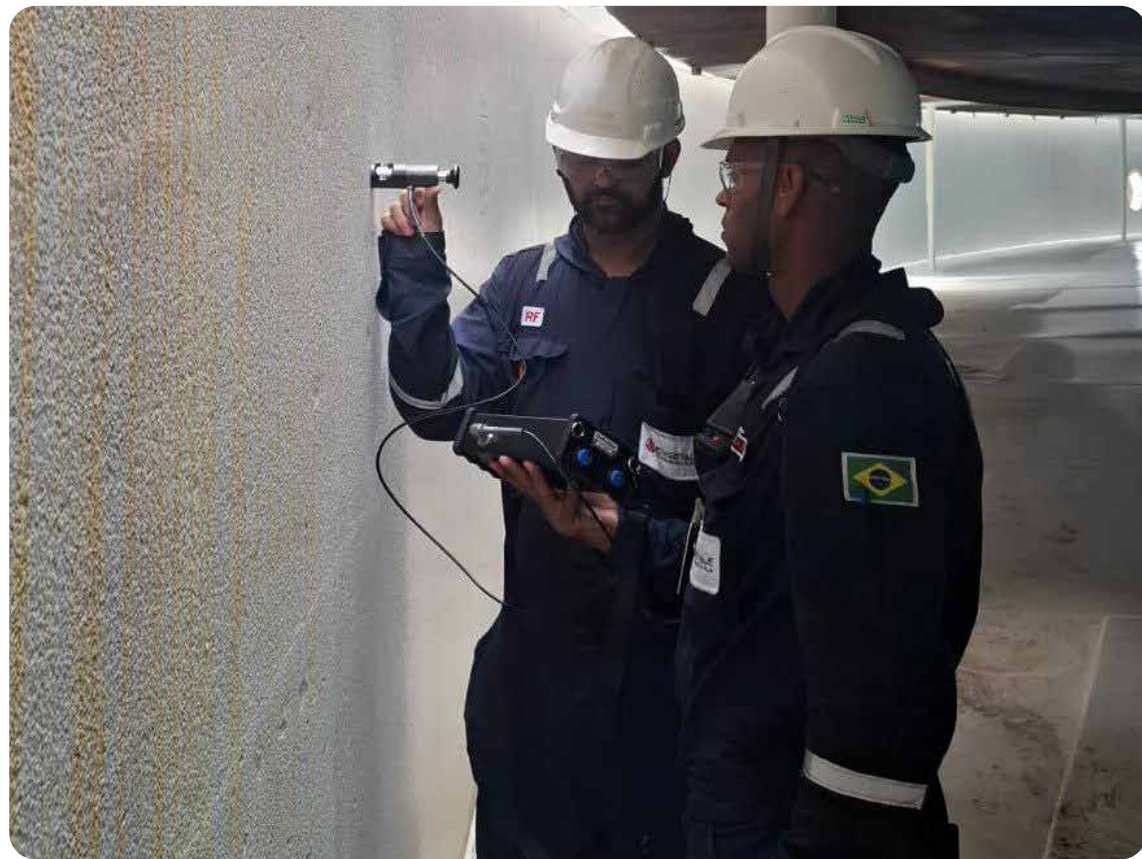
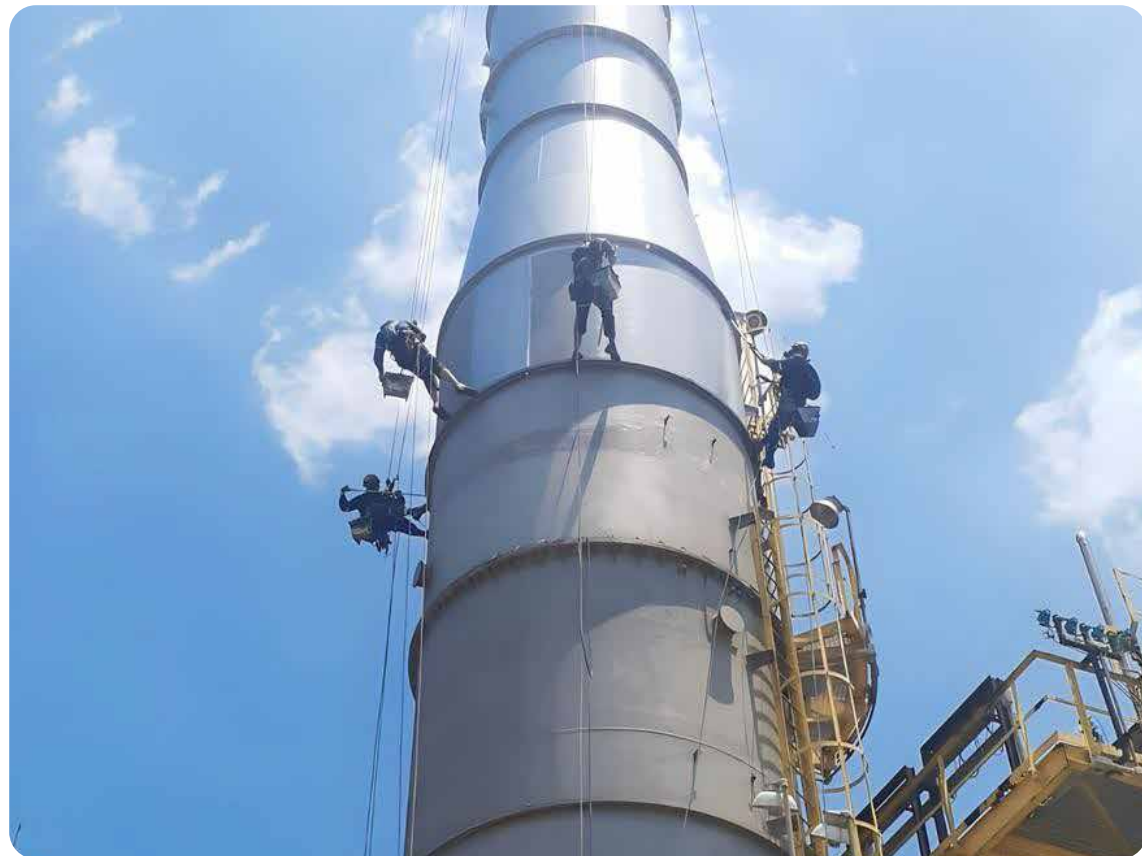
# Routine Maintenance

- Management of long-term contracts and large workforces across various models, with performance-based evaluation.
- Development of a continuous maintenance and inspection plan for preventive and corrective actions.
- Monitoring and performance analysis of equipment, identifying potential improvements and performance increases.
- Systemic control of total maintenance costs.
- Process analysis aiming for improvements in routine operations.
- Studies of critical and chronic cases, bringing increased productivity and cost reduction.
- Prompt responses in case of emergencies, with a trained and qualified team to mitigate and restore operations.





# Routine Maintenance





# Routine Maintenance





# Industrial Maintenance





# Industrial Maintenance

- Conveyor belts.
- Metallic structures.
- Storage tanks.
- Furnaces and boilers.
- Thermal insulation.
- Oil and gas pipelines.
- Heat exchangers.
- Piping.
- Reactors.
- Heat exchangers.
- Towers, vessels and filters.
- Industrial cleaning services.
- Anti-corrosion treatment and painting.
- Warehouses.



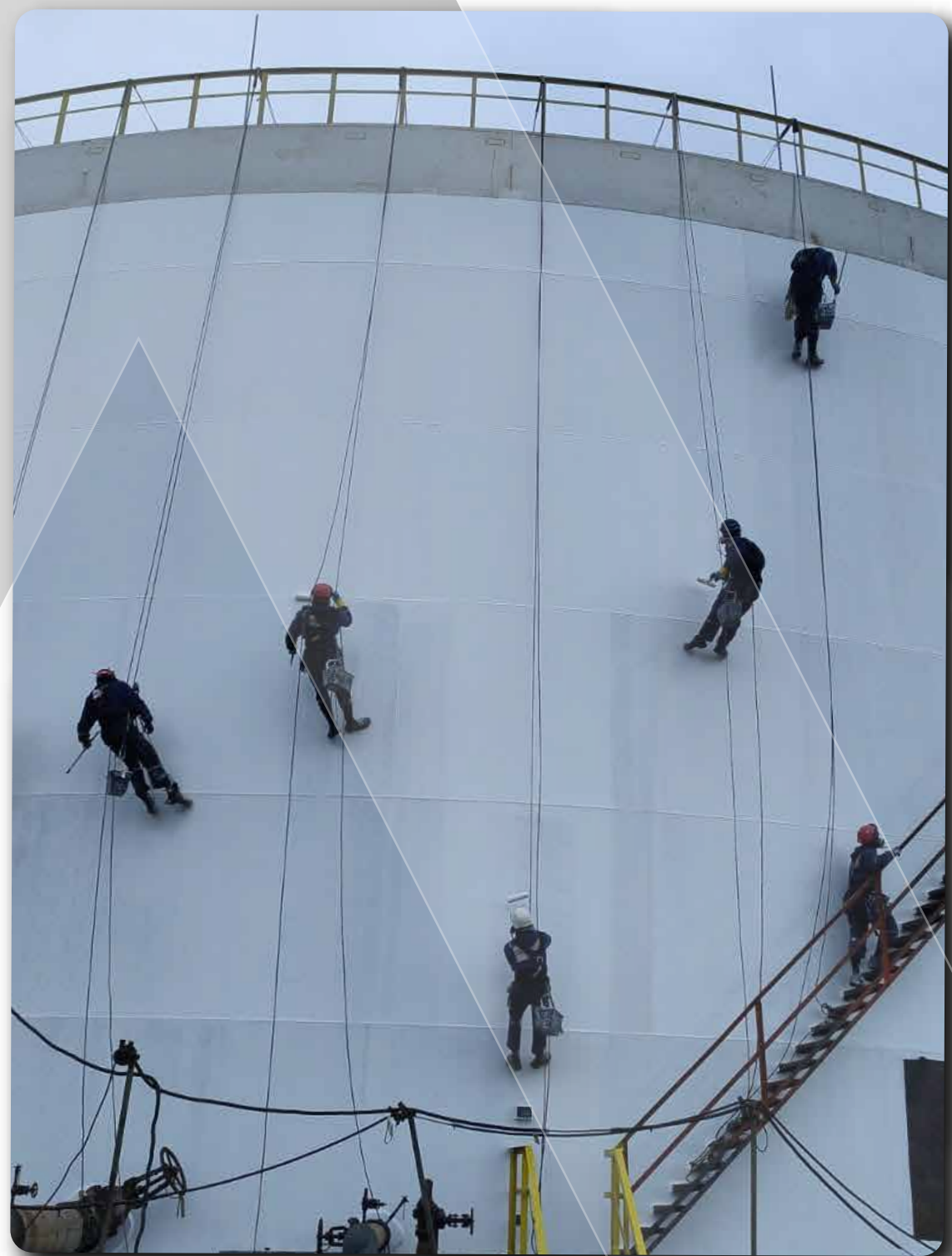


# Industrial Maintenance





# Industrial Maintenance





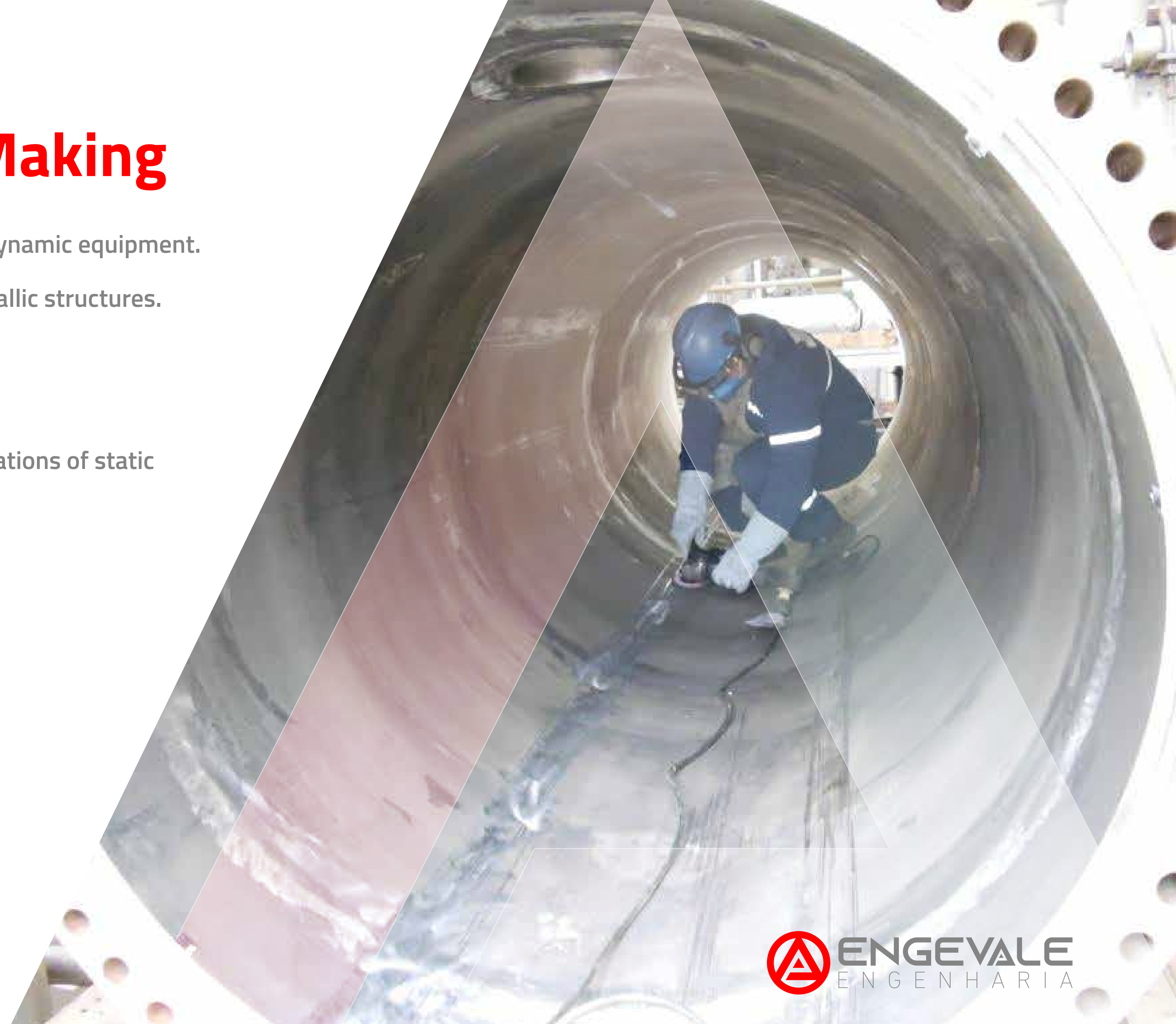
# Specialized Boiler Making





# Specialized Boiler Making

- Boiler making and maintenance of static and dynamic equipment.
- Fabrication, maintenance, and recovery of metallic structures.
- Scaffolding assembly.
- Painting and thermal insulation.
- Fabrication, maintenance, repairs, and modifications of static equipment, ducts, piping, and industrial skids.
- Spool pre-fabrication.
- Hydraulic torqueing.
- Specialized welding.





# Specialized Boiler Making





# Heavy Civil Construction



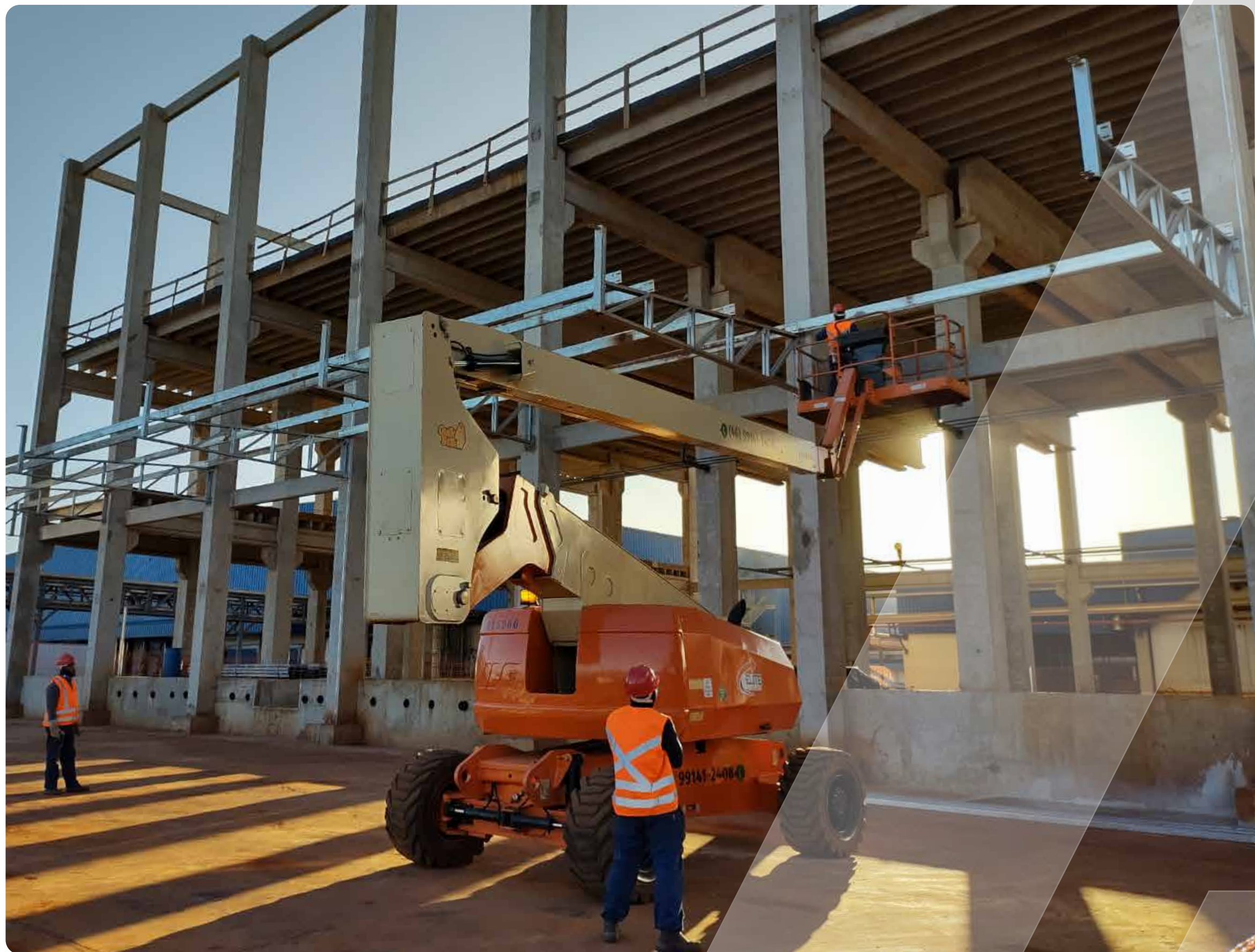


# Heavy Civil Construction

- Execution of Turnkey, Greenfield, and Brownfield projects.
- Earthmoving.
- Paving.
- Galleries and drainage.
- Industrial warehouses.
- Pre-cast concrete construction.
- Metallic structure construction.
- Site infrastructure.
- Structural recovery.



# Heavy Civil Construction





# Electromechanical Assembly



# Electromechanical Assembly

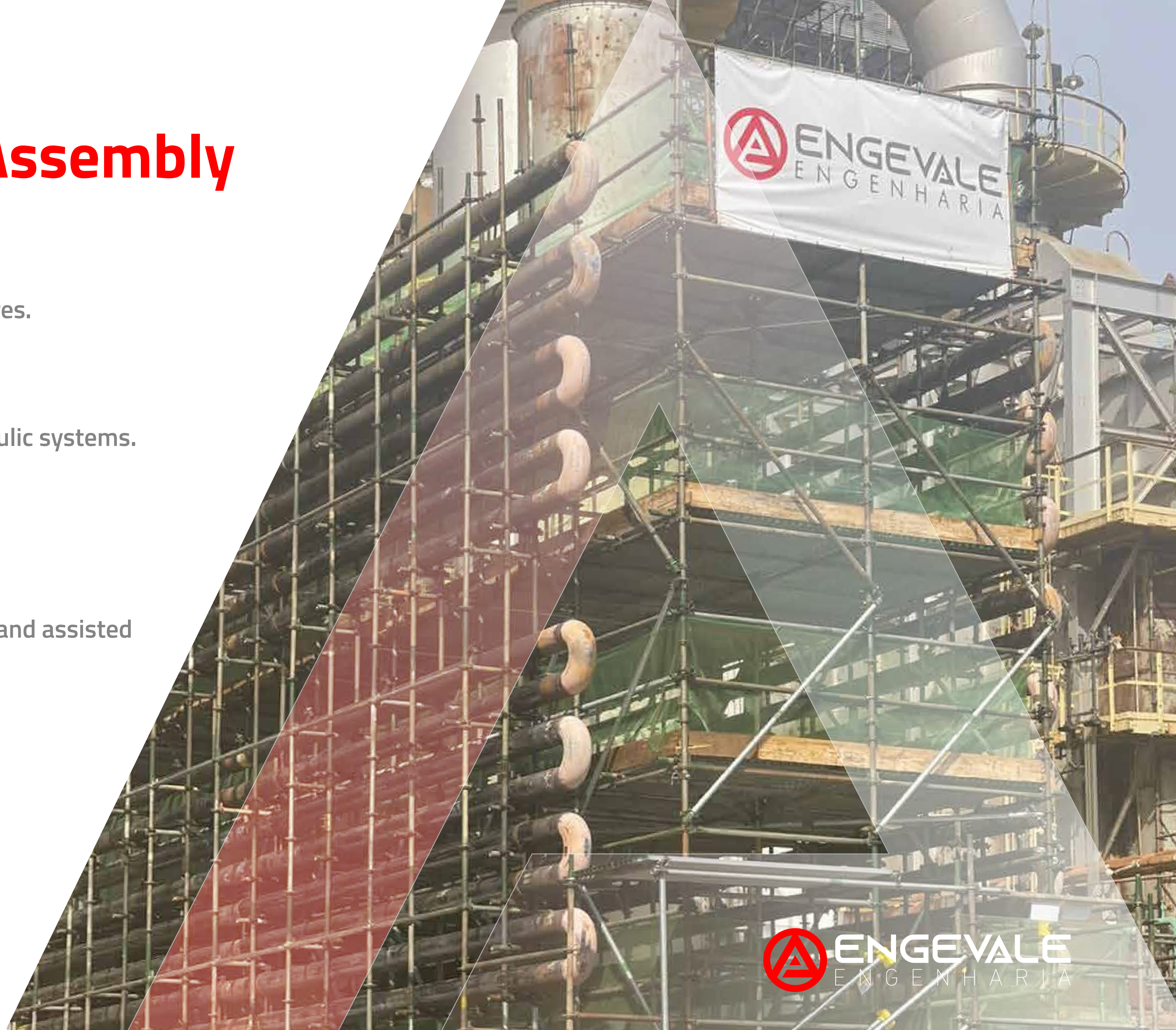
- Installation of mechanical and electrical machines and equipment.
- Electrical installations in low and medium voltage systems.
- Renovation of tanks, reactors, process towers, and complementary equipment.
- Assembly of spools and piping systems.
- Assembly of chemical recovery and auxiliary boilers.
- Assembly of electrical projects and system automation.
- Assembly of Balance of Plant (BOP).
- Assembly of coking units.
- Assembly of steel and HDPE pipelines.





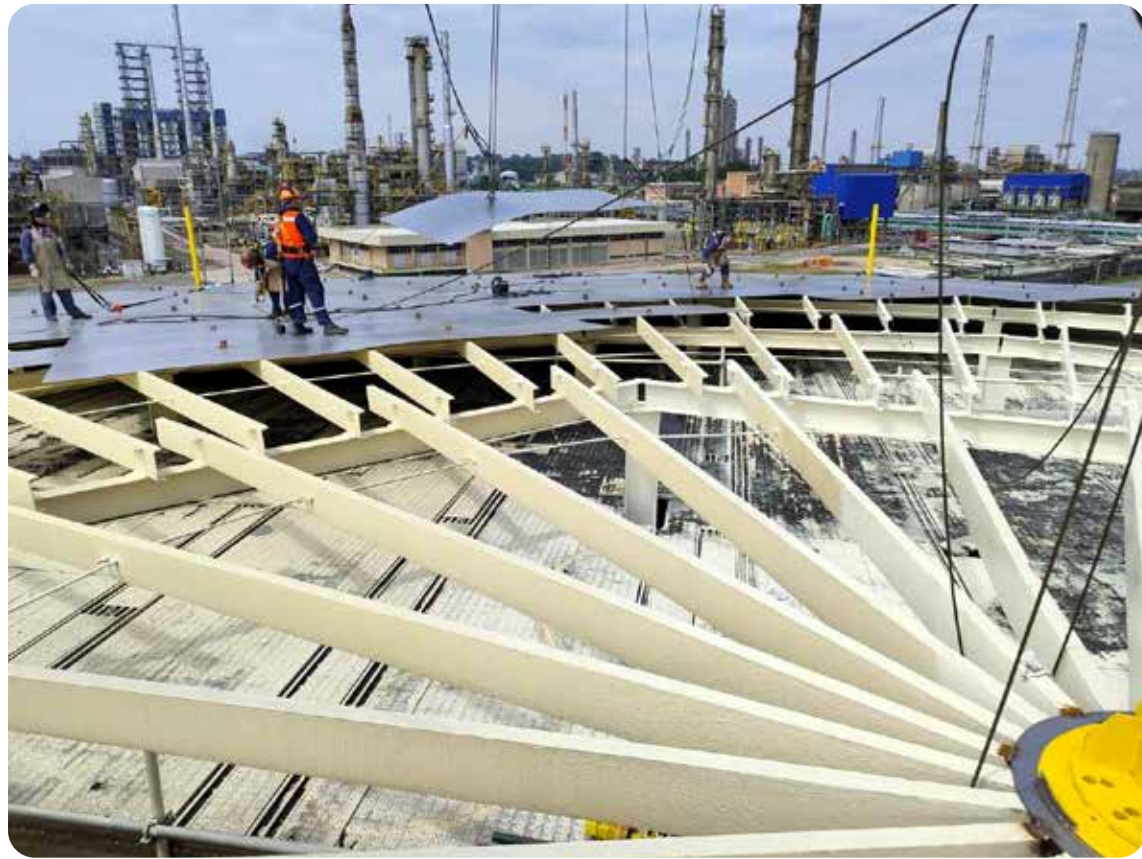
# Electromechanical Assembly

- Electrical assembly of distribution networks.
- General maintenance of storage tanks and spheres.
- Expansion of industrial plants.
- Replacement of gas cleaning systems and hydraulic systems.
- Replacement of piping and reactors.
- Structural recovery of plants.
- Hot and cold commissioning of plants, start-up, and assisted operation.
- Electromechanical disassembly.





# Electromechanical Assembly





# Electromechanical Assembly





# MAIN CLIENTS

Ausenco

 **BOSCH**

 **EVONIK**  
INDUSTRIES

**exiros**

 **GERDAU**

**(JBS)**

**Jervois**

**Mosaic®**

 **OneSubsea**  
A Schlumberger Company

 **PETROBRAS**

 **SEARA**

 **Ternium**

 **TRANSPETRO**

 **ZEECO**

 **ENGEVALE**  
ENGENHARIA



# UNITS



## TAUBATÉ

1236 Charles Schneider Ave., Ste. 10/11  
Parque Senhor do Bonfim  
Taubaté, SP 12040-000  
Brazil



## TREMEMBÉ

298 Rodrigues Alves St., Ste. 02  
Centro  
Tremembé, SP 12120-000  
Brazil



## SÃO PAULO

1455 Juscelino Kubitschek Ave., 4th floor  
Vila Nova Conceição  
São Paulo, SP 04543-011  
Brazil



engevale.engenharia



Engevale Engenharia

[www.engevale.com](http://www.engevale.com)

Powered by Kezae Agency | [www.kezae.com](http://www.kezae.com)

